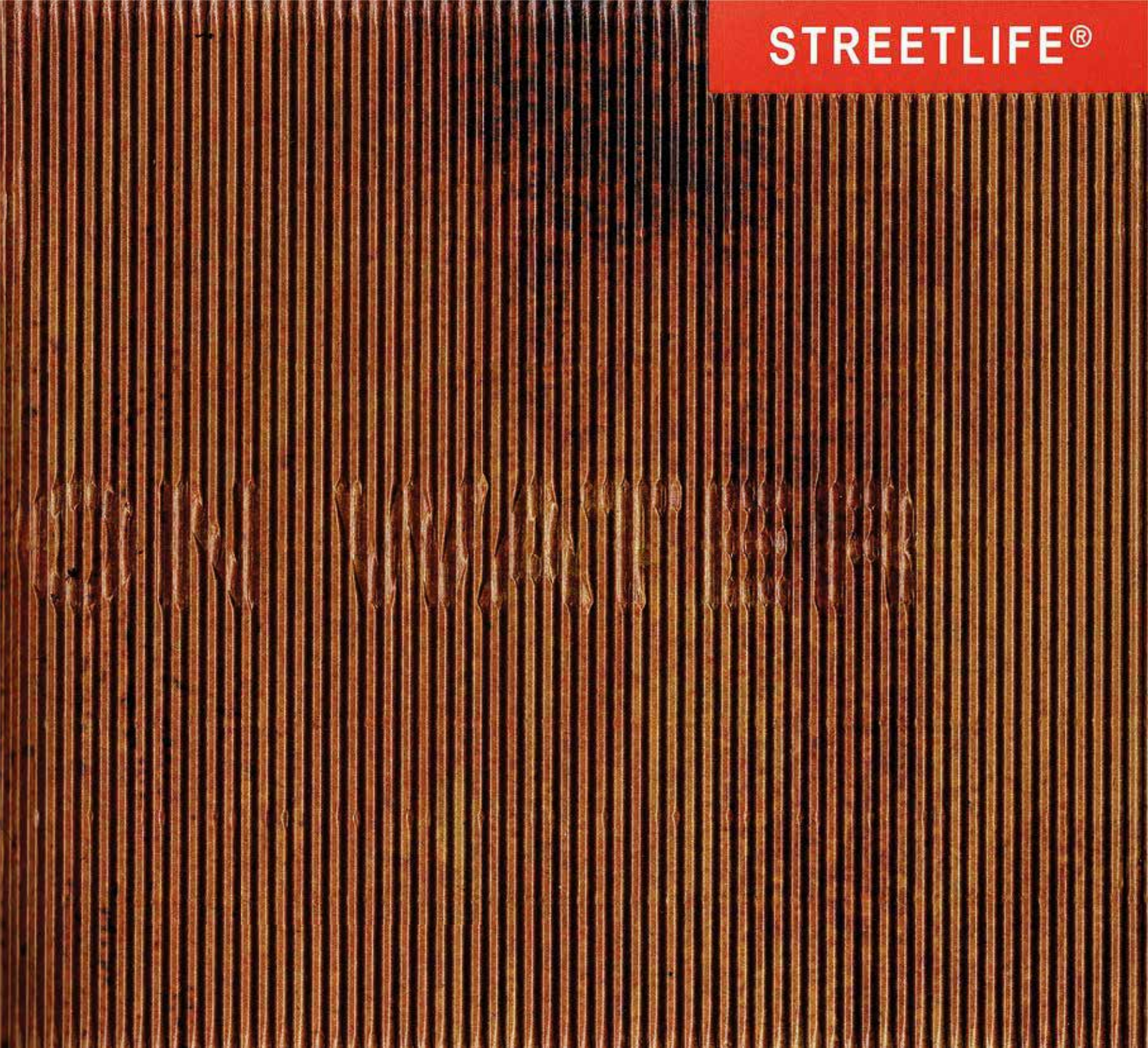


STREETLIFE®



STREETLIFE HQ

Herengracht 36
2312 LD Leiden, Netherlands
T +31 (0)71 333 33 33
E streetlife@streetlife.com
www.streetlife.com

STREETLIFE United Kingdom

T +44 (0)20 30 20 1509
E enquiriesUK@streetlife.com

STREETLIFE France

T +33 (0)1 83 71 01 71
E demandes@streetlife.com

STREETLIFE Deutschland

T +49 (0)211 545 71 343
E Auskunft@streetlife.com

STREETLIFE Studio Scandinavia

Sweden
T +46 (0)41 677 50 53
E scandinavia@streetlife.com

STREETLIFE Studio America

Philadelphia, PA
T +1 215 247 0148
E usa@streetlife.com
canada@streetlife.com

STREETLIFE Middle East

by WT Burden, Dubai, UAE | Doha, Qatar
T +971 (0)4 88 607 00
E streetfurniture@wtburden.ae

More information is available on our website:

- the complete Streetlife Collection
- online catalogue (PDF): available in Dutch, English, German & French
- Streetlife's vision on Sustainability
- recent projects and product photos

Follow STREETLIFE BV on   



Bowie Bridge powder coated steel
Kristiansand NO

Walking on Water

Streetlife is a design-driven company with a passion for creating innovative design elements for public spaces. By using the landscape as a starting point for our designs, we create unique products that possess a natural style. The Streetlife Collection includes durable pedestrian and bicycle bridges with contemporary appearances. We also offer four types of sustainable decking systems.

In addition to design and specifications, we also handle manufacturing competently and professionally when realising our projects. Clients find our design and deliver process hugely beneficial because the entire process is taken care of by a single experienced party: Streetlife. All bridges meet the standards of the Eurocode and the National Annex.

You can find more information on the bridge design and deliver process in the introduction. The bright blue booklet in the middle of this brochure explains the six main steps involved and an overview of projects realised in different regions.

Please do not hesitate to contact us for more information. All our advisors have an architectural or a product design background. We communicate in Dutch, English, German, Swedish, French and Spanish. We look forward to your response.

Peter Krouwel

Designer & Director Streetlife



Index

Introduction
Overview Bridges Collection
Ribbon
Bowie
Branches
ONA
Twisting
Crossline

Process + References

Swan
Solo
Bold
Zen CorTen
Country Low & High
Decking Systems

Overview Bridges Collection

Small bridges *ca. 3-9 meter long*

Medium bridges *ca. 6-16 meter long*

Long bridges *longer than 16 meter*



Solo



Bowie CorTen



Twisting



Bold



Ribbon



Zen CorTen



Branches



Crossline



Country High



Bowie Serpentine



Country Low



Ona



Single Swan



Millipede



Crossline Custom
Extended & Supported

Partner in Bridges

Streetlife designs and develops durable pedestrian and bicycle bridges. It offers the possibility to produce distinctively designed and contemporary bridges in virtually any location in a simple way. A Design&Deliver process eliminates the risks for the client. Due to the fact that the whole process is conducted by a single party the total cost of the process will be reduced to a minimum.

Streetlife bridges are engineered to conform with local standards and approved by external engineers conform national legislation of your project location: Eurocode + Nat. Annex / USA & Canadian standards.

Our strengths

- Use of sustainable materials. Bold & Contemporary architectural design, in the 'natural style' of Streetlife.
- Clear and effective communications using three-dimensional images and CAD drawings for accelerating decision-making process.
- Design, engineering and manufacturing in one country and (optional) placement.
- Drawings, images and static calculations for planning permission purposes.
- No upfront design cost.



Ribbon Bridge



Ribbon Bridge
100% CorTen steel construction

“Continuous developments in building technology enable us to redesign the bridge construction. The long span is redefined and accentuated by a beautiful 3D fence with optional LED lighting. The Ribbon design comprises a monolithic bridge entirely constructed from a single material, CorTen steel.”

Emiel Volker
Designer & Engineer Ribbon Bridge

Ribbon Bridges

The Ribbon Bridge is constructed entirely from one single material – CorTen sheet steel. This makes the bridge exceptionally durable and unique. CorTen steel imparts a warm, natural patina. It also requires extremely low maintenance and has a long lifespan. The Ribbon Bridge is constructed as a single ‘monolithic’ structure, which gives even the underside of the bridge a beautifully finished appearance.

Because of the closed shape, a long and slender span is possible. The spatial fence made from CorTen strips is fully integrated with the bridge girder, affording the construction a sleek design. Optional LED lighting makes this bridge an eye-catching feature in both urban and rural environments.

length max. 18 meter
width max. 3 meter
type flat
decking CorTen steel
fencing CorTen steel + wooden handrail and LED-option

Ribbon Bridge





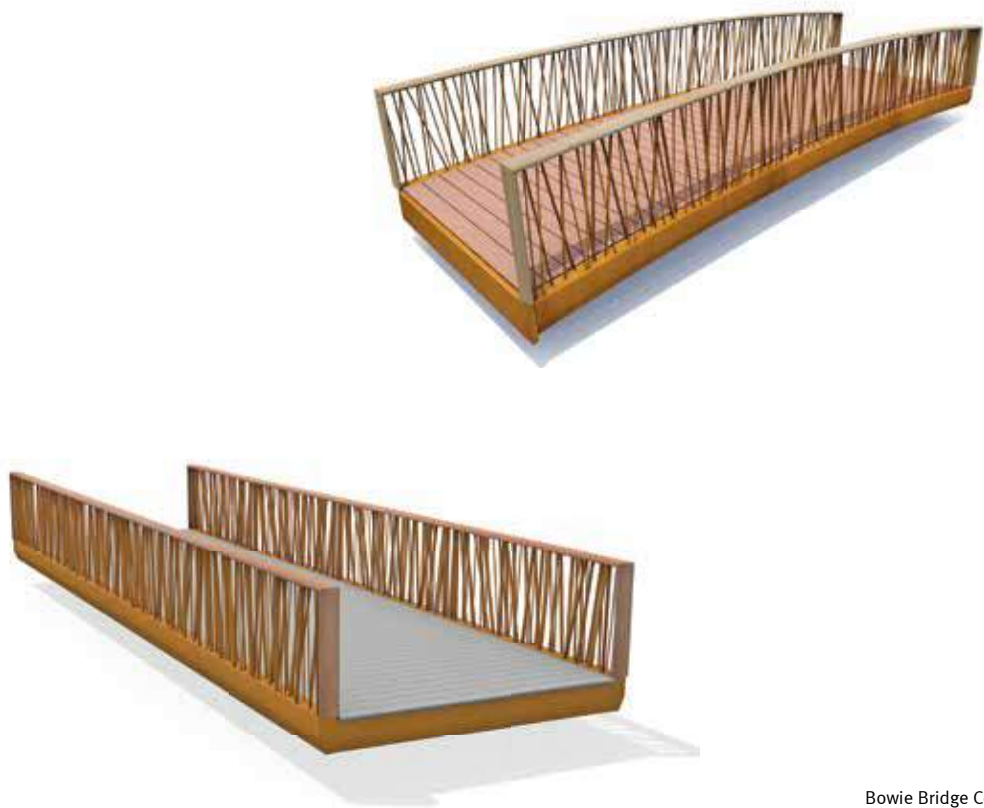
“The Bowie Bridge is inspired by the David Bowie song ‘Wild is the Wind’. The continuous fencing system of criss-crossed balusters, uninterrupted by posts, creates a fascinating impression.”

Peter Krouwel
Designer Bowie Bridge

**Bowie
Bridge
Powder
Coated**



Bowie Bridge
powder coated, flat



Bowie Bridge CorTen
arched and flat



Installation on location of a prefab bridge in Châlon-Sur-Saone, FR



**Bowie
Bridge
CorTen**



Bowie Bridge Serpentine

Bowie Bridges

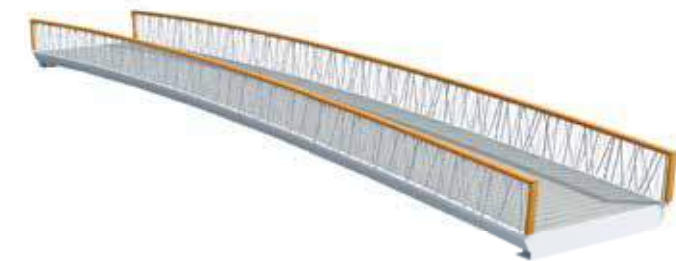
Bowie Bridges Serpentine meander through the landscape or across wetlands (on the left). In addition to the Bowie fence, these bridges can also be fitted with Single Swan, Chevron and Twisting fencing.

While the **CorTen** and powder coated fences are manufactured with steel strips, the **stainless steel** version consists of round bars, varying in diameter (max. 30 mm). The result is a very rigid and strong balustrade. If necessary, the bar pattern can be condensed to meet the highest safety standards. The Bowie Bridge is available in arched and flat versions.

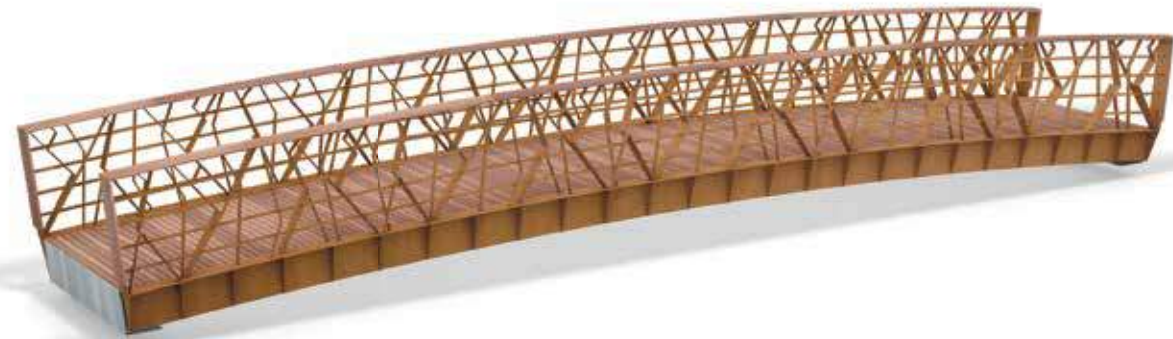
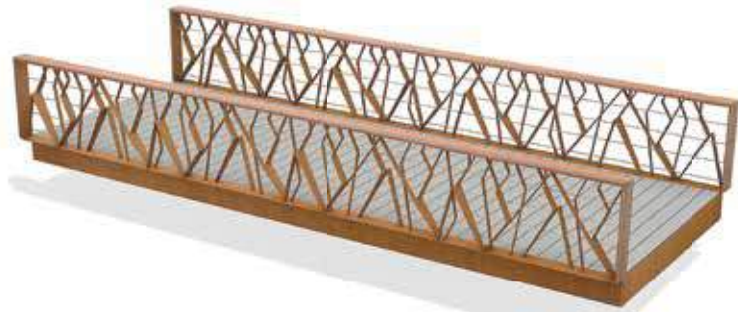
<i>length</i>	max. 16 meter
<i>width</i>	max. 3 meter
<i>type</i>	flat or arched
<i>decking</i>	all Streetlife decking materials
<i>fencing</i>	stainless steel, powder coated or CorTen steel



Bowie Bridge stainless steel
Algård NO



Bowie Bridge stainless steel
arched version



Branches Bridge CorTen
flat or arched

Branches Bridges

The Branches Bridge has a continuous fence consisting of abstracted branches. CorTen steel strips branch out and are nested together to form a stable, semi-enclosed fence, finished with a FSC wooden handrail. The Branches Bridge projects a very organic and natural image.

length max. 16 meter
width max. 3 meter
type flat or arched
decking all Streetlife decking materials
fencing CorTen steel + wooden handrail
Note This product is not available in North America.



Branches Bridge
Friedhof Ohlsdorf, Hamburg DE



Branches Bridge



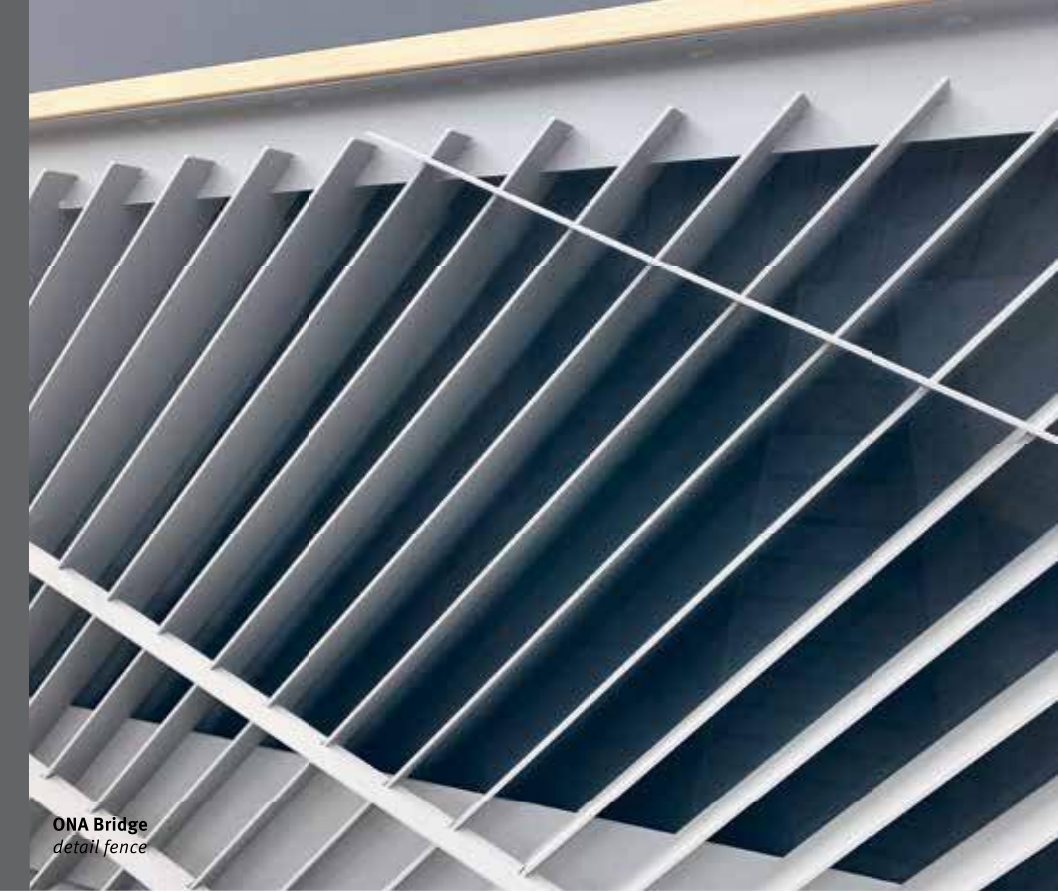
ONA Bridge

ONA Bridges

The Ona Bridge features a continuous balustrade with a dynamic graphic design created from CorTen or powder coated steel strips. The continuous balustrade is topped with an FSC® hardwood handrail. The Ona Bridge can be flat or slightly arched with a maximum span of around 16 m - 52 ft. Standard widths are 2 or 3 m - 6.6 or 10 ft.

This is a beautiful architectural bridge that can be fitted with various types of decking.

<i>length</i>	max. 16 meter
<i>width</i>	max. 3 meter
<i>type</i>	arched
<i>decking</i>	all Streetlife decking materials
<i>fencing</i>	CorTen & powder coated steel + wooden handrail
<i>Note</i>	<i>This product is not available in North America.</i>



ONA Bridge
detail fence



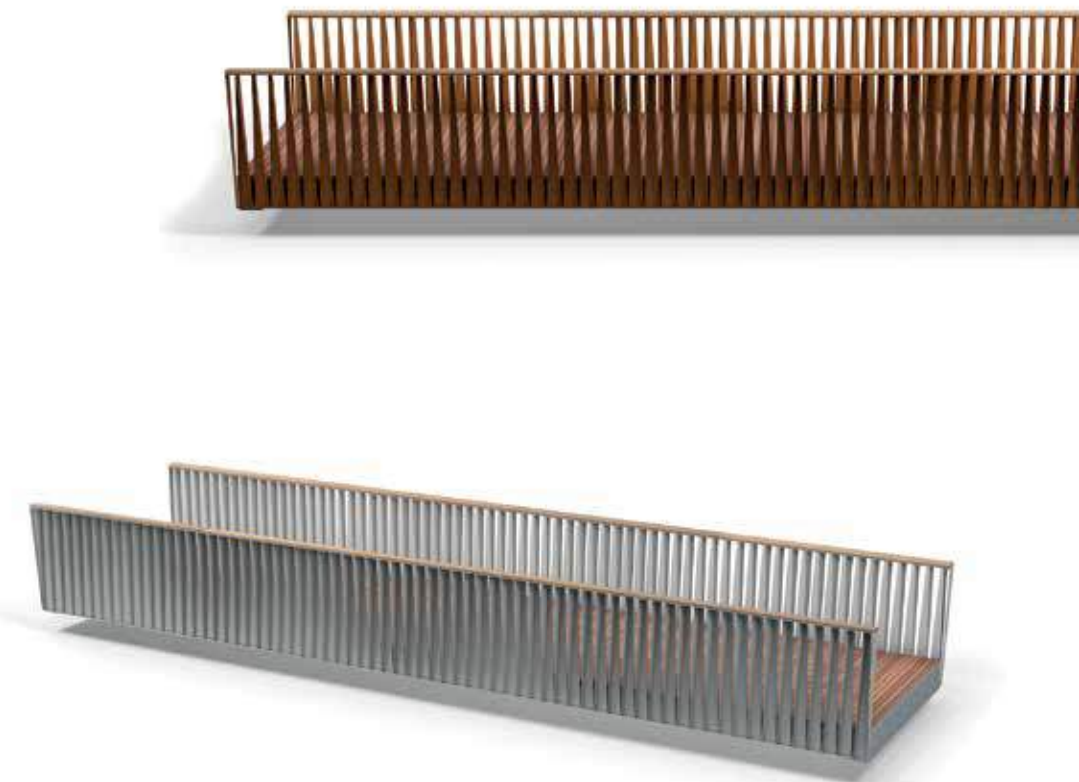
ONA Bridges CorTen & powder coated
lightly arched



Twisting Bridge

“I’ve tried to create movement in a static object, such as a bridge. The light reflects in a rhythmical way from the rotating steel strips. It’s different from every angle, which makes the bridge come to life when you walk across or stand next to it.”

*Frenk Stokman
Designer Twisting Bridge*



Twisting Bridges CorTen & powder coated
flat variant only



Crossline Bridge Wild CorTen
Vlaardingen NL

Crossline Bridge



Crossline fencing Wild CorTen
Dubai UAE



horizontal wiring



Wild fence



LED-ready



Crossline Bridge CorTen

Crossline Bridges

Crossline Bridges are flat bridges with a segmented balustrade. The frames give these bridges a naturally sophisticated look. The robust frames are made of CorTen and covered with an FSC hardwood railing. The infill is available in horizontal stainless steel cables or criss-crossed stainless steel balusters. Our team is also happy to contribute ideas if a different insert is desired.

The choice of materials and the fine dimensioning of the insert create a stylish contrast with the robust frames. Lighting can be placed underneath the railing for a subtle effect. This concealed placement ensures diffuse lighting that will not blind passers-by. A beautiful solution both technically and aesthetically.



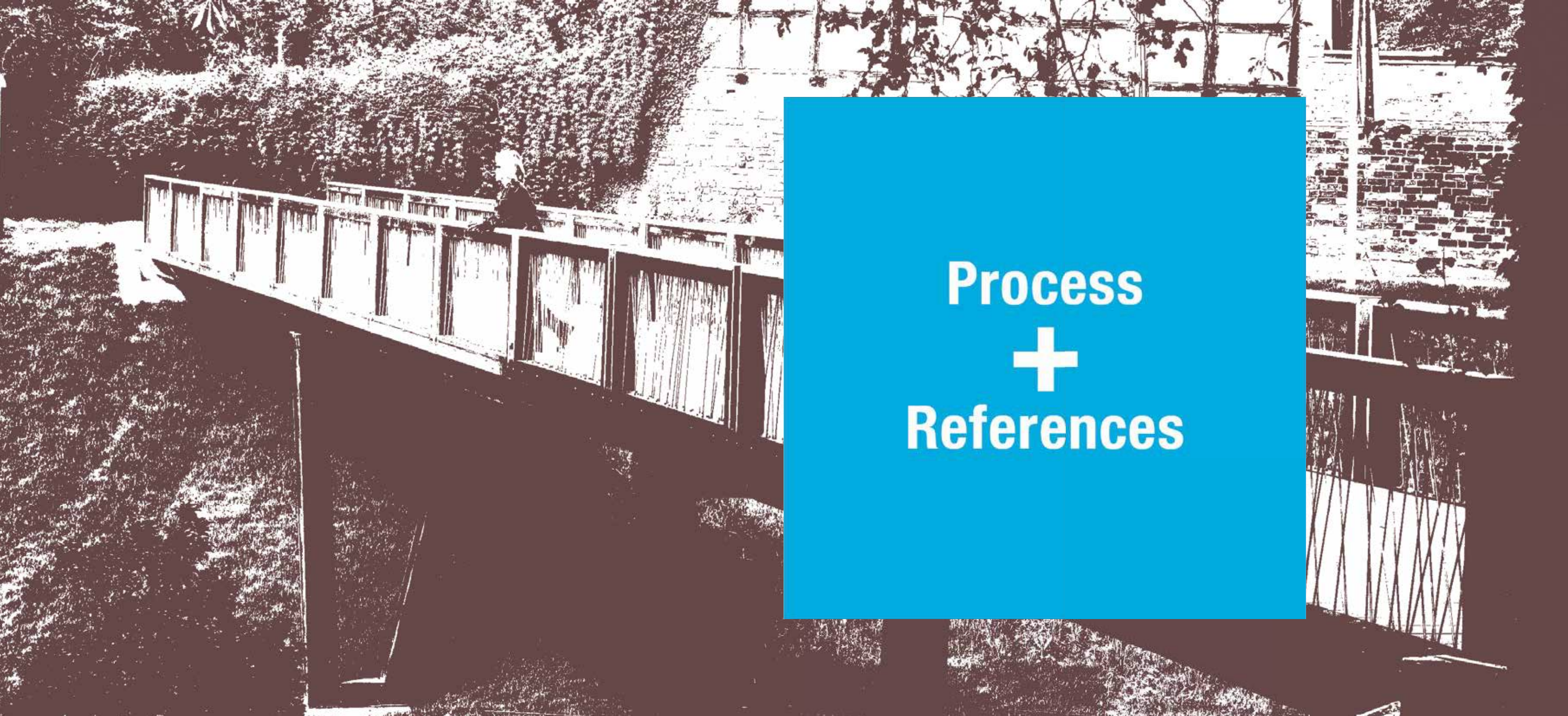
Crossline Bridge
Oud-Beijerland NL

<i>length</i>	max. 16 meter
<i>width</i>	max. 3 meter
<i>type</i>	flat
<i>decking</i>	all Streetlife decking materials
<i>fencing</i>	CorTen & powder coated steel + wooden handrail all around

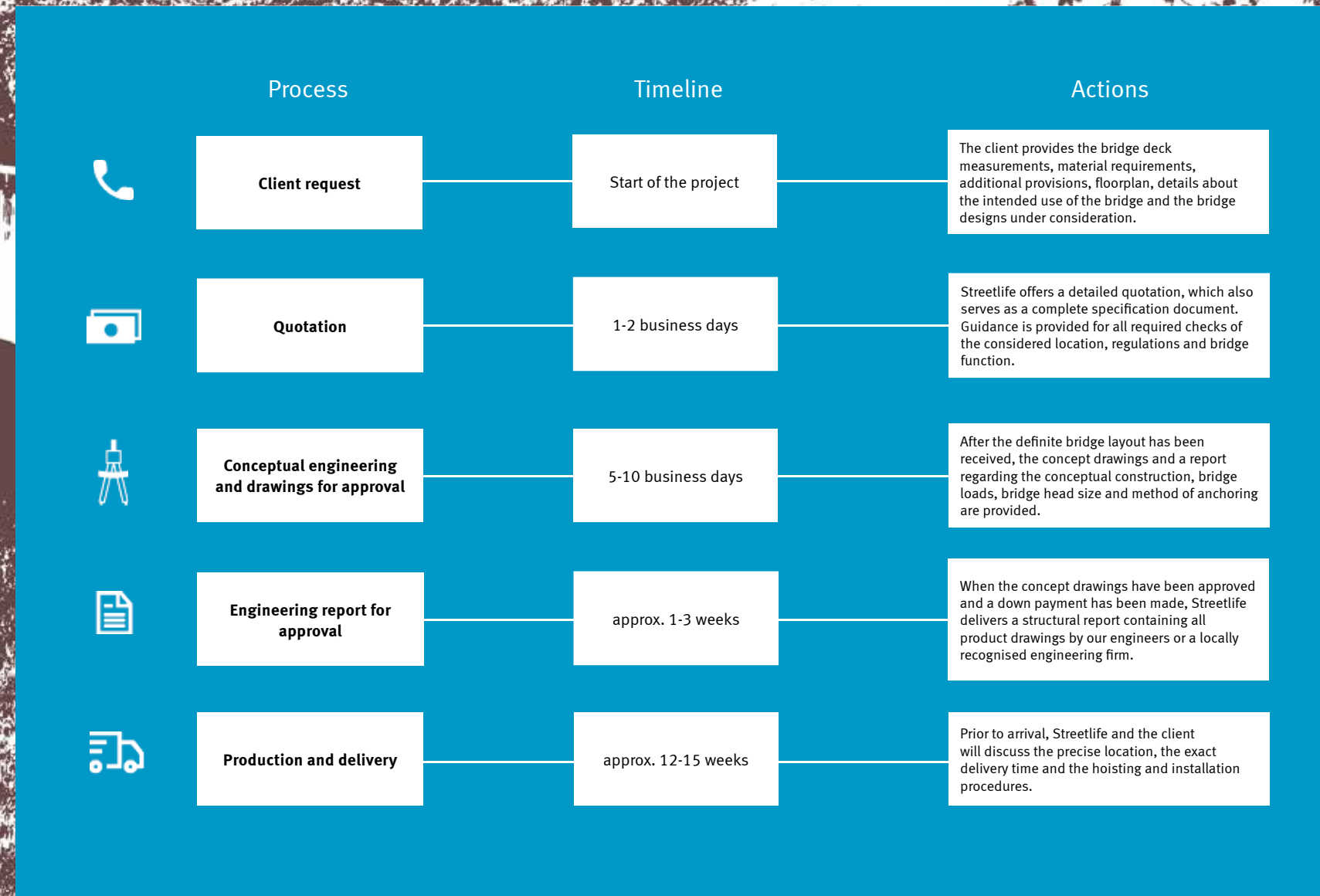
Crossline Bridge



Crossline Bridge
Herent BE



**Process
+
References**

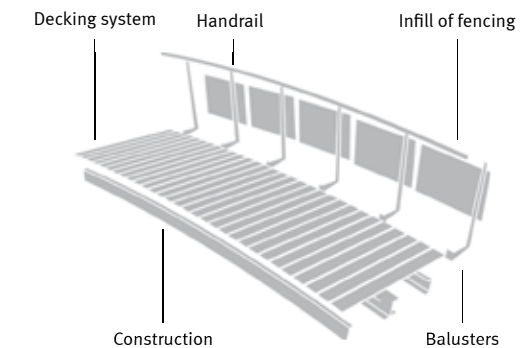


Design and deliver process

Streetlife uses a five-step plan for its design and deliver process, from idea to realisation. This diagram shows how Streetlife can assist you through each phase by providing the correct information relating to your project. Short delivery times are possible, with approximately 12-14 weeks required for production once the drawings have been approved. As our bridges are delivered almost completely prefabricated, installation takes just a few hours. The main factor influencing delivery time tends to be the

Modular bridges

Thanks to the modular principle of our bridge designs, our collection provides endless combination possibilities.



References France



Single Swan Bridge

Number: 1 bridge
Project: Passerelle Cité Taffin Vieux Condé
Locatie: Vieux Condé
Client: Ville de Vieux Condé
Architect: Atelier Nervures
Contractor: Idverde (ISS)
Decking system: Solideck®50



Bowie Bridge CorTen

Number: 1 bridge
Project: Maison des Vins
Locatie: Châlon-sur-Saone
Client: Ville de Châlon-sur-Saone
Architect: Agence JDM Paysagistes
Contractor: Idverde SASU



Bowie Bridge CorTen

Number: 1 bridge
Project: Place du 19 Mars
Locatie: Ahuy
Client: Commune de Ahuy
Architect: Aménageur: BAFU, Bureau d'Aménagement Foncier d'Urbanisme
Contractor: Duc & Preneuf Bourgogne
Decking system: Cordeck®Dots

References Germany



Solo Bridge Custom

Number: 1 bridge
Project: Bastinsweiher Stolberg
Locatie: Stolberg
Client: Stadt Stolberg
Architect: club L94 Landschaftsarchitekten GmbH
Contractor: A. Frauenrath Landschaftsbau GmbH & Co. KG



Solo Bridge All Black

Number: 1 bridge
Project: Die Säge
Locatie: Niedereschach
Client: Werner Wohnbau GmbH & Co. KG
Contractor: Werner Wohnbau GmbH & Co. KG
Decking system: Cordeck®40



Shortline ZigZag Bridge

Number: 1 bridge
Project: Alte Druckerei Radeberg
Locatie: Radeberg
Client: Stadt Radeberg
Architect: Planungsbüro Schubert GmbH
Contractor: RP Bau GmbH
Decking system: Asphalt-ready

References the Netherlands



Solo Bridge All Black

Number: 2 bridges
Project: Park Nauerna
Location: Assendelft
Client: NV Afvalzorg Holding
Architect: Cees Sollman
Contractor: NV Afvalzorg Holding



Crossline Bridge

Number: 2 bridges
Project: Park 't Nieuwelant
Location: Vlaardingen
Client: Gemeente Vlaardingen
Architect: EP Advies
Decking system: Streetdeck®40



Zen CorTen Bridge

Number: 1 bridge
Project: Harinxmaland
Location: Sneek
Client: Gemeente Súdwest-Fryslân
Architect: Jelle Koorstra
Contractor: Gemeente Súdwest-Fryslân

References Belgium



Bold Bridge

Number: 2 bridges
Project: De Koolhofput
Location: Nieuwpoort
Client: Provincie West-Vlaanderen
Architect: Plantec Architecten B.V.
Contractor: bvba Daniël Seru en Zonen
Decking system: Truedeck®35



Country Bridge High

Number: 1 bridge
Project: Dorpsplein
Location: Sint-Martens-Bodegem
Client: Gemeente Dilbeek
Architect: Arcadis Belgium NV
Contractor: Colas Centrum NV
Decking system: Streetdeck®40



Bowie Bridge

Number: 4 bridges
Project: Heizijdse Velden
Location: Turnhout
Client: Gemeente Turnhout
Architect: Groep Infrabo
Contractor: APK Wegenbouw NV
Decking system: Streetdeck®40

References North-America



Crossline Bridge

Number: 1 bridge
Project: RÊVE Boulder
Location: Boulder, Colorado
Client: Southern Land Company
Contractor: Southern Land Company
Decking system: Solideck®70



Solo Bridge

Number: 3 bridges
Project: Paradise Valley Estates
Location: Fairfield, California
Client: Paradise Valley Estates
Architect: RHAA Landscape Architecture
Contractor: BrightView Landscape Development



Swan Bridge (fencing)

Number: 1 bridge
Project: Patsy Cline Memorial Park
Location: Winchester, Virginia
Client: Mellon and the Winchester City Council
Architect: Terrane Landscape Architecture, LLC
Contractor: Vision Restoration and Contracting, LLC

References Canada



Bold Bridge

Number: 2 bridges
Project: Royal Botanical Gardens
Location: Hamilton/Burlington, Ontario
Client: Royal Botanical Gardens
Architect: Janet Rosenberg & Studio Inc.
Contractor: Ira McDonald Construction Ltd.



Bold Bridge

Number: 5 bridges
Project: Blatchford
Location: Edmonton, Alberta
Client: Blatchford Redevelopment Office
Architect: Stantec, Edmonton Office
Contractor: Classic Landscapes Ltd.

“It was a real pleasure to work with Streetlife. The technical team was supportive and worked according to all design and aesthetic criteria drafted by the design team. The installation of the bridge was simple and offered room to redress any dimensional inconsistencies that may have been present in the supporting structure.”

Kanay Patel | Chief Inspector
Southern Land Company, Boulder

References United Kingdom



Single Swan Bridge

Number: 1 bridge
Project: Severnside Energy Recovery Centre
Location: Severnside, South Gloucestershire
Client: SUEZ - SITA
Architect: URS - Aecom
Contractor: Sir Robert McAlpine / Landcraft Projects Ltd.



Shortline ZigZag Bridge

Number: 1 bridge
Project: Romford Commercial Centre
Location: Romford, London
Client: Higgins Homes PLC
Architect: Tully De'Ath Consultants Ltd.
Decking system: Streetdeck®40



Crossline Bridge

Number: 2 bridges
Project: North West Cambridge Development
Location: Cambridge
Client: University of Cambridge
Architect: LDA Design
Contractor: Carey Group PLC

References Scandinavia



Bowie Bridge Stainless Steel

Number: 1 bridge
Project: Torg og Kanalpark
Location: Ålgård, Norway
Client: Gjesdal kommune
Architect: Dronninga landskap AS
Contractor: Georg Stangeland AS



Bowie Bridge Custom

Number: 3 bridges
Project: Albano Campus
Location: Stockholm, Sweden
Client: Akademiska Hus
Designer: Streetlife
Contractor: NCC



Solo CorTen Bridge

Number: 1 bridge
Project: Numedalslågen promenade
Location: Hvittingfoss, Norway
Client: Kongsberg kommune
Contractor: Kongsberg kommune
Decking system: Cordeck®Dots

All products are protected by international design applications, patents and copyrights.
All intellectual property rights reside with Streetlife BV.



Editor and copyright 2021: Streetlife, Leiden
FSC registration: FSC C105477

Concept, direction and text: Peter Krouwel and Emiel Volker
Development and coordination: Aimée Kan

Photography: Streetlife BV, Tajana Werner
Graphic detailing: Coördesign Leiden, Remco Mulckhuysse

Considering variations in material prices, we advise you to always request a quotation that includes pricing and delivery times. Quality and sustainability, down to the smallest detail, are key aspects of every Streetlife design. Streetlife reserves the right to change dimensions, specifications and prices.



Single Swan Bridge CorTen
Vieux-Condé FR

Single Swan Bridge



Installing a Single Swan Bridge
Vieux-Condé FR

“In terms of design, the Single Swan Bridge has it all. Stepping onto the bridge gives you a warm, welcoming feeling because of the totally unique style. The handrails are elegantly curved, which lends a very chic appearance. The bridge embraces the entire landscape and serves as a perfect ornament in the location it occupies.”

Valérie
Blogger citomag.fr and local resident of Vieux-Condé



Installing a Single Swan Bridge
Sevenside, UK

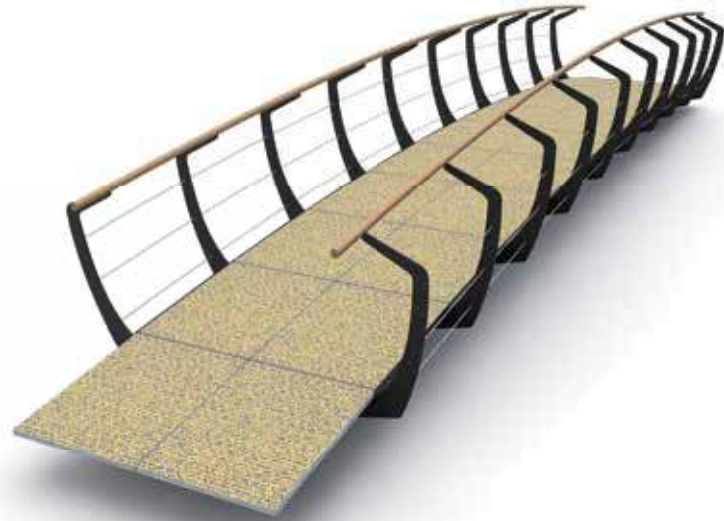
Swan Bridges

Swan Bridges are equipped with a fence in CorTen steel or powder coated steel in a RAL-colour. The Swan fencing system gives the bridge an extra-wide look and feel and improves accessibility. The CorTen balusters have a standard height of 110 cm - 43" and are complemented by a rounded handrail in wood or stainless steel.

The fencing is fitted with full-length stainless steel cables or partially fitted with CorTen mesh panels to meet international safety standards. The bridge is finished with beautifully curved CorTen panels along the load-bearing structure.

This design makes the fencing difficult to climb over.

<i>length</i>	max. 16 meter
<i>width</i>	max. 3 meter
<i>type</i>	flat & arched
<i>decking</i>	all Streetlife decking materials
<i>fencing</i>	CorTen, powder coated or galvanised + wooden handrail
<i>Note</i>	<i>This product is not available in North America.</i>



Single Swan Bridge
powder coated & arched



Single Swan Bridge
CorTen & flat



Single Swan Bridge



Solo Bridge
All Wood



Solo
Bridge
Custom

Solo Bridge custom
Stolberg DE

Solo
Bridge
Wood



Solo Bridge Wood
Hvittingfoss NO



Solo Bridges

Solo Bridges are small pedestrian bridges that are preferably executed with a slight arch. The entire load-bearing deck structure comprises a thick-walled CorTen steel plate: maximum dimensions 3 m - 10 ft wide and 8 m - 26 ft long. As an alternative to CorTen steel, the bridge deck can be finished with Solideck®70 in FSC hardwood or All Black.

The vertical posts are 70x70 mm - 3x3 inches and available in FSC hardwood or recycled plastic All Black beams. The result is a bridge fence with a distinctly graphic character. The posts are mounted invisibly and remain adjustable after installation. The hardwood beams will naturally grey over time.

<i>length</i>	max. 16 meter
<i>width</i>	max. 3 meter
<i>type</i>	arched
<i>decking</i>	CorDeck or Solideck
<i>fencing</i>	Solid hardwood or All Black + stainless steel handrail



Solo Bridge
All Black fence + decking



Solo Bridge All Black



Bold Bridge galvanised
Nieuwpoort BE

Bold Bridge



Bold Bridge
powder coated, arched



Bold Bridge galvanised
Burlington CAN

“As successor to the Country Bridge, the Bold Bridge is just as modest in design but with more refined detailing. The seemingly simple bridge has fencing that is finished with an attractive oval planed handrail. This bridge is both robust and timeless.”

Team Streetlife
Designer Bold Brug



Zen CorTen Bridge



Zen CorTen Bridge
Sneek NL

Zen CorTen Bridges

Zen CorTen Bridges are small pedestrian bridges with a short span of up to eight metres. The whole load-bearing, decking structure is constructed from a single, thick-walled CorTen steel plate up to 200cm - 7 ft wide and 800cm - 26 ft long.

The low fence combines simplicity with a certain oriental style. The CorTen steel railing is capped with FSC hardwood, and the projecting ends have been rounded off substantially. After several years, the horizontal CorTen plate will colour dark brown.

A dot-pattern can be incorporated in the decking for extra grip (see further our Decking Systems).

<i>length</i>	max. 8 meter
<i>width</i>	max. 2 meter
<i>type</i>	arched
<i>decking</i>	CorTen steelplate
<i>fencing</i>	CorTen + CorTen/wooden handrail



Zen CorTen Bridge



Country Bridge High
Weesp NL

Country
Bridge
High



Country Bridges High
galvanised & CorTen



Country Bridge High powder coated Steel
Epen NL



Country Bridges Low
R&R All Black & Hardwood



Country Bridge Low
Båstad SE

Country Bridges Low

The Country Bridges Low have a functional appearance and adapt to their environment. The Country Low fence is intended for wide landscapes and park environments with shallow water. The balustrade is beautifully detailed with laser-cut supports. A rural bridge for small spans up to 12 meters - 39 ft long.

The Country Bridges Low are provided with a low balustrade with a height of 30 cm - 12". In addition, various Streetlife deck materials can be used.

Country Bridges High

Previous page The flat Country Bridges High are no-nonsense. Although reserved, the detailing has been beautifully executed. The characteristic Rough&Ready beam rests on industrial hot dip galvanised uprights. The beam is made of FSC® hardwood or All Black, material obtained from recycled plastic. These reinforced All Black beams are extra rigid and strong. Stainless steel cables are stretched parallel under the beam to maintain the effective character.

The uprights can also be made of CorTen steel for a warmer appearance. The bridges have a simple profile-carrier construction.

length	max. 12 meter
width	max. 3 meter
type	flat
decking	all Streetlife material
fencing	CorTen, powder coated or galvanised steel + wooden or All Black handrail

Country Bridge Low



Country Bridge Low
Vlaardingen NL



Streetdeck®40



Streetdeck®40



Cordeck® Dots



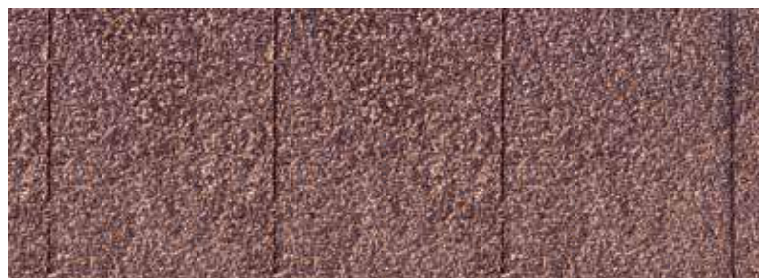
Cordeck® Variados



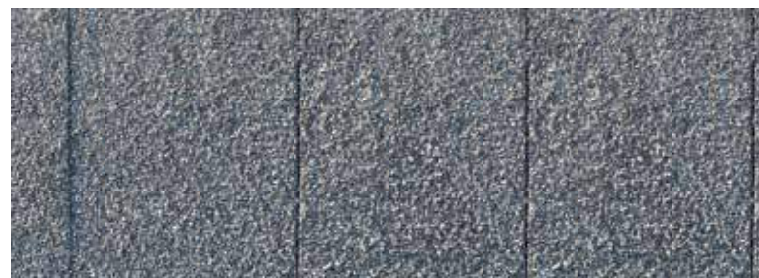
Solideck® Wood



Solideck® All Black TWIN



Truedeck® 40



Truedeck® 40

Decking Systems

Choosing decking that is both stylish and resistant to wear is important to any project. The Streetlife Collection includes five unique decking systems that are designed to perfectly complement Streetlife's bridges and jetties in both their form and function. The different materials available in our decking systems allow for a variety of looks, from eye-catching to neutral. Streetlife's decking is also durable, making it a smart investment.

Choose from the following five decking systems:

- Streetdeck®40 * (1)
- Cordeck®Dots (2)
- Solideck®70 FSC hardwood and All Black (3)
- Truedeck®40 * (4)

Streetlife decking is sturdy in its dimensions. With a thickness of 40 mm or more, our decking can support more weight while requiring fewer underlying support beams. This makes the substructure more effective in use of materials, and therefore more durable. Streetlife decking systems are perfect for slow traffic bridges and jetties. In addition, they are also ideally suited for platforms or roof terraces. It is also possible to opt for a steel deck in preparation for asphalt (applied by third parties on site) or to apply a customised wear layer in consultation.

All decking systems have a quick and invisible mounting system detailed in the specifications. If you have any questions regarding decking types, mounting methods, slip resistance, applications, or more, please do not hesitate to contact us. If you would like to request an estimate, we recommend sending a first technical drawing showing the number of required square metres.

*This product is not available in North America.
All the decking systems are protected by intellectual property rights of Streetlife.

Decking Systems



1.



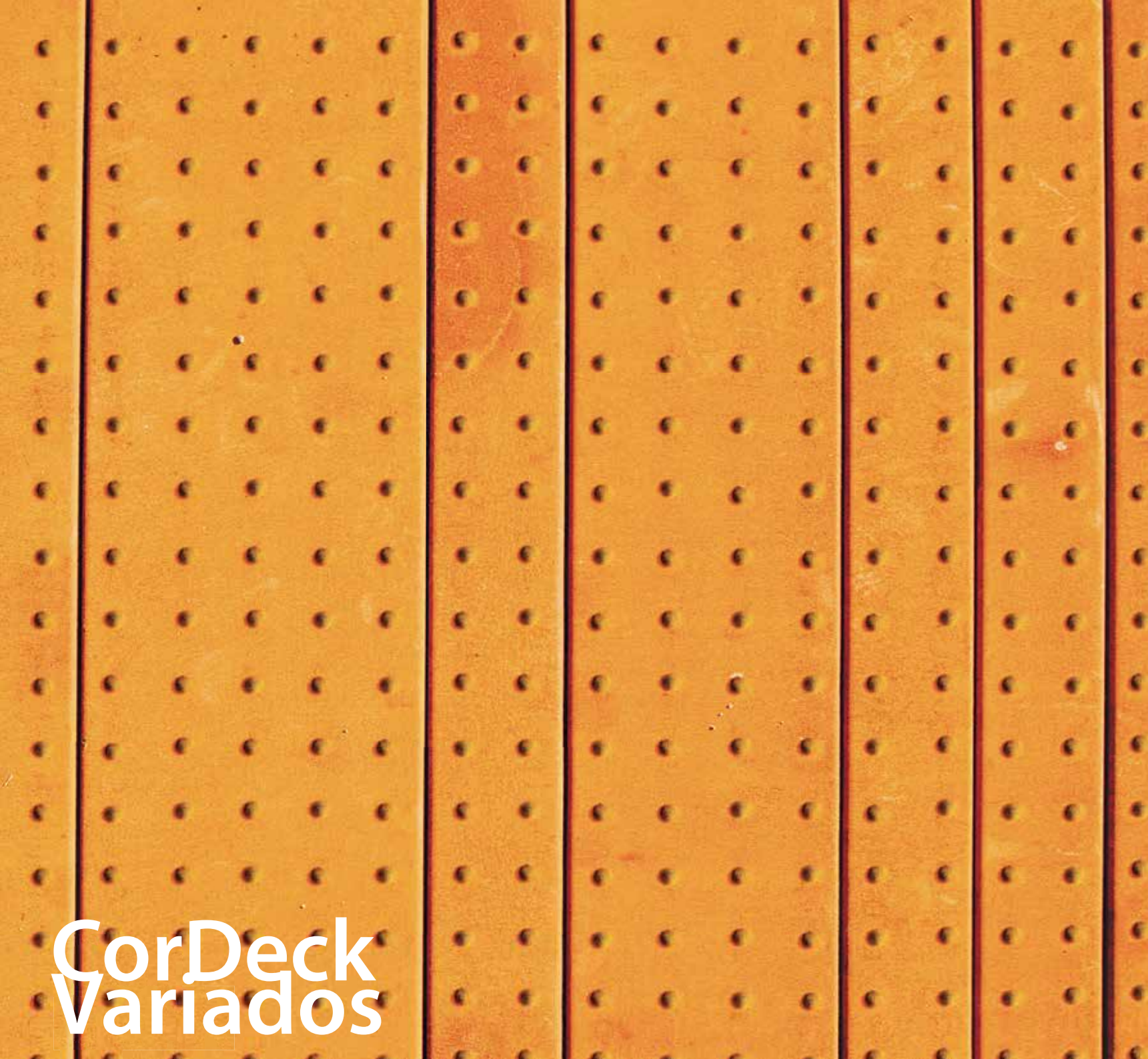
2.



3.



4.



**CorDeck
Variados**

Cordeck®

The Cordeck® profiles are made of CorTen steel sheet. A relief of round dots is arranged in a regular pattern and provides good grip: the decking is extra slip-resistant. Cordeck® Dots Decking has a very long lifespan. Cordeck® profiles are invisibly attached by clamping them to the frame. Mounting hardware is included.

Solideck®

Solideck®70 Wood is Streetlife's top of the line decking system. It is a particularly solid and strong decking system made of 7x7 cm -3"x3" 100% FSC® hardwood slats with the highest durability rating. The slats are top-mounted and invisibly clipped into place using fastening clamps. This makes assembly fast and easy. For an extra rugged look, the 7x7 cm slats can be installed with a deck overhang.

Truedeck®

Truedeck®40 is a complete composite decking system comprising pultrusion profiles, which are invisibly anchored and finished with gravel. As the composite resin of the pultrusion profiles is almost identical to the bonding resin of the coloured gravel, there are no differences in expansion, thus improving lifetime expectations. Closed deck or boards.

Streetdeck®

Streetdeck®40 is an environmentally-friendly alternative to hardwood. It is not only sustainably-sourced, but also more slip resistant and more durable than hardwood. This decking has a clean-lined, contemporary look and is available in two colours. Streetdeck®40 is made of a composite wood comprising 75% chipped waste wood and 25% synthetic material.



Solideck®
with anti-slip strip



Truedeck®
Closed deck



Streetlife Thematic Brochures



Rough&Ready Range



Solid Series



Green&Groovy
Green Benches and Tree Products



TWIN-Concept
Sustainable and Circular Solutions



Walking on Water
Small Pedestrian Bridges

Catalogue 2021-2022



Streetdeck®40
Delft NL

Follow STREETLIFE BV via

